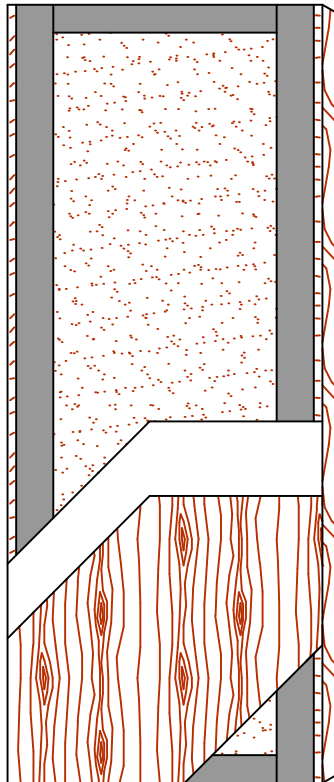


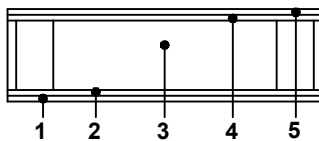


COMMERCIAL AND ARCHITECTURAL
DOOR MANUFACTURER

U.S.A. : 1 800 363.2248
Can. : 1 800 463.3124
info@lambtondoors.com



ECE/EME



COMMERCIAL AND ARCHITECTURAL DOORS

EnviroDesign
SERIES NO UF™

Acoustical Door

NO UREA FORMALDEHYDE

Compatible edge **5-STC45-ECE**
Matching edge **5-STC45-EME**

SPECIFICATIONS DESCRIPTION

Type	Sound dampening core (interior use).
In conformity with industry standards	ARCHITECTURAL WOODWORK STANDARDS -ED.1 WDMA Series I.S.1-A-2011 ASTM E413-04 ASTM E2335-04 ASTM E1332-90 ASTM D5456-09 C.S.A. 0132.2 Serie 90
Thickness	1-3/4" (44 mm).
Maximum size	48" x 120" (1 219 mm x 3 048 mm).
Stiles	ECE: 15/16" (24 mm) wood (mill option) laminated to 4" (102 mm) structural composite lumber (SCL). EME: 15/16" (24 mm) hardwood laminated to 4" (102 mm) structural composite lumber (SCL).
Rails	3" (76 mm) structural composite lumber (SCL).
Core	Proprietary material.
Adhesive	Type I, fully waterproof; PVA (no urea formaldehyde); VOC<0.683 g/L.
Face	Wood veneer or MDO bonded to a UF free composite crossband. No added urea formaldehyde resin.
Acoustical rating	STC45 For pair and transom, the STC rating will be affected.
Lite opening	Limited to 1296 po ² (0,836 m ²). Will affect STC rating.
Notes	<ul style="list-style-type: none"> ● Door tested using Zero International Hardware. <ul style="list-style-type: none"> ● 1 row of Weatherstrip #475 on doorstops, Specify finish : "AA" : Clear Anodized (in stock). "D" : Dark Bronze Anodized. "G" : Gold Anodized. ● 1 Rabbed Threshold #564A. Specify finish : "A" : Aluminium (in stock). "B" : Bronze. "D" : Dark Bronze Anodized. ● 1 row of Spring #119WB on head and jambs, and bottom rail of the door. Specify finish : "B" : Brass (in stock). "S" : Stainless Steel. ● The use of hardware other than those tested will affect STC rating ● Stile and rail dimensions shown are rough sizes, before trimming. Dimensions will vary depending on the hardware. ● For pairs and transom, Lambton Doors will provide a wood astragal with S88BL Siliconeal TM gasket. ● Heavy duty hinges must be used. Weight : 11.2 lbs/sq. ft. (54.6 kg/sq. m.). ● Not available with fire rating.
Warranty	Life of original installation. See our complete warranty for details.
Factory finish	UV Finishing System. Stain, clearcoat, opaque and primed finish available. Custom color matching available. Seal top and bottom standard. No VOC.
Environmental description	Recycled content (LEED MRc4.1, 4.2). Low Emitting Materials (LEED EQc4.4). FSC Certified Wood available on request (LEED MRc7).

INFORMATION www.lambtondoors.com