



COMMERCIAL AND ARCHITECTURAL
DOOR MANUFACTURER

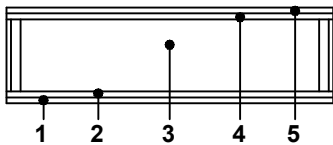
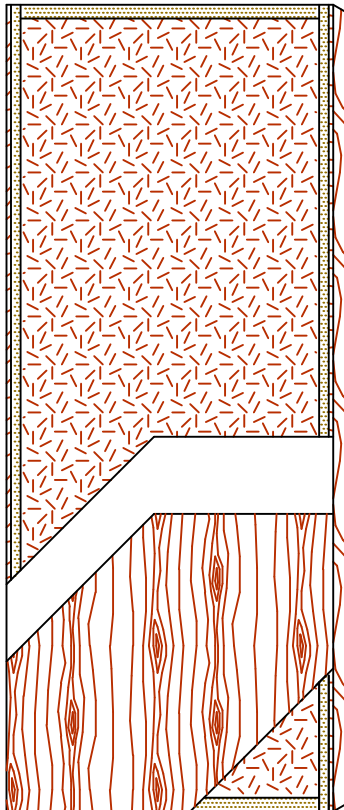
U.S.A. : 1 800 363.2248
Can. : 1 800 463.3124
info@lambtondoors.com

COMMERCIAL AND ARCHITECTURAL DOORS

Particleboard core

Compatible edge **5-PC-CE**

Matching edge **5-PC-ME**



SPECIFICATIONS	DESCRIPTION
----------------	-------------


Type	Particleboard core (interior use).
In conformity with industry standards	ARCHITECTURAL WOODWORK STANDARDS-ED.1 W.D.M.A. SERIES I.S.1-A-2004 ASTM D5456-09 ANSI A208.1
Thickness	1-3/8" (35 mm) – 1-3/4" (44 mm). 2" (51 mm) – 2-1/4" (57 mm).
Maximum size	48" x 120" (1 219 mm x 3 048 mm).
Stiles	CE: 7/16" (11 mm) wood (mill option) laminated to 1" (25 mm) structural composite lumber (SCL). ME: 7/16" (11 mm) hardwood laminated to 1" (25 mm) structural composite lumber (SCL).
Rails	1-7/16" (36 mm) structural composite lumber (SCL).
Core	Particleboard core with a density of 28-32 PCF (449-513 kg/m ³) LD-1, bonded to the stiles and rails.
Adhesive	Type I (waterproof); PVA (no urea formaldehyde); VOC<0.683 g/L.
Face	Wood veneer or MDO bonded to a composite crossband.
Options	<ul style="list-style-type: none"> ●LD-2 core. ●[Door 1-3/4"- (44 mm)] 20 minute rating neutral or positive pressure. Refer to Fire Door Section of our website for details. ●15/16" (24 mm) wood (mill option) or hardwood laminated to 1" (25 mm) structural composite lumber (SCL). ●Bifold.

Lite and louver openings	Wood louvers not permitted in 20 minute labeled doors. Cut-out must not exceed 40% of door area. Minimum 5" (127 mm) from stiles or rails. Minimum 1-1/2" (38 mm) from cut-out to cut-out. Refer to Option Section of our website for details.
--------------------------	--

Notes	Stile and rail dimensions shown are rough sizes, before trimming. Dimensions will vary due to prefit requirements.
-------	--

Warranty	Life of original installation. See our complete warranty for details.
----------	---

Factory Finish	UV Finishing System. Stain, clearcoat, opaque and primed finish available. Custom color matching available. Seal top and bottom standard. No VOC.
----------------	--

Environmental Description	Recycled content (LEED MRc4.1, 4.2). 
---------------------------	---

INFORMATION www.lambtondoors.com

